

CURB-TEC, Inc.

Machinery Dedicated to the Curbing Industry



CT-900

Curb-Extruder

Professional, Efficient
Economical, Versatile
User-Friendly



Light, Easy to
Maneuver around
the Job Site

Powerful, 14 HP
Air-cooled Engine

Hinged Engine Cover

Convenient
Lift/Push/Pull
Handles

Extra Large Hopper
8.7 Cu. Ft,
(.25 Cu. Mtr)

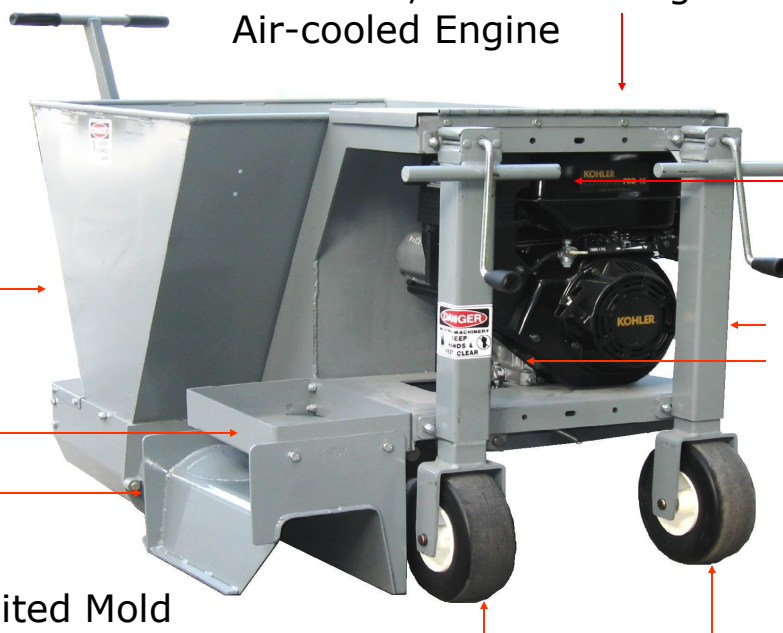
Rear Elevation
Jacks
(4 Pt. Jacking)

Tool Tray

Symmetrical
Compactor
Tube

UnLimited Mold
Possibilities

Asphalt Friendly,
Solid RubberTires



FEATURES & BENEFITS:

- ▶ Designed by Experienced Curbers. **User Friendly, Maximum Profit.**
- ▶ Fast, 22 Feet/Minute. **Most Curb Feet per Payroll Dollar in its Class.**
- ▶ Unique Balanced Chassis Design. **Extrude a 16" Radius, Fill Footer, & Form Curb in One Pass. Stable, Excellent for Under Guard Rail curbing.**
- ▶ Lite Weight. **Easy to Handle & Load on /off Trailer**
- ▶ Fast. **Order LARGE Ready Mix Truck Loads, Less Downtime & Cost.**
- ▶ Wide solid rubber tires. **No flats, Asphalt Friendly.**
- ▶ Large hopper. **Less Spillage, Less Waste. Place Remote Locations.**
- ▶ Great Mold selection. **Standard & Custom Designs Create New Possibilities & Opportunities. Take Advantage of Our Experience & Knowledge**
- ▶ Symmetrical Compactor Tube & Auger. **Easy to Flip, Doubles Part Life**
- ▶ Interchangeable molds. **Most Molds Fit the CT-900 & CT-3000.**
- ▶ Kohler Engine. **Dependable & Powerful, 3 Year Warranty**
- ▶ Hard faced and Cast augers. **Long Life, Low Operating Cost.**
- ▶ Smart overall design. **Maintenance-Friendly. Fast & Dependable**
- ▶ Rebar-Friendly. **Curb Over or Feed Thru the Auger.**
- ▶ Quick Change Molds, Compactor Tube, and Auger. **Reduced Labor Cost.**
- ▶ Inbord Steering Handle, **Work up against walls and fences.**
- ▶ 4, 5, & 6 Inch Diamater Augers, **Install Greater Range of Curb Sizes**



SPECIFICATIONS

- ▶ **Engine:** 14 HP, KOHLER, or 12 HP HONDA, Air-cooled, Gasoline.
- ▶ **Weight: (Empty)** 595 lbs. (270 kg)
- ▶ **Dimensions:** 66" (168 cm) Long, 32", (82 cm) Tall, 32" (82 cm) Wide
- ▶ **Hopper capacity:** 8.7 Cu. Ft. (.25 Cu. Mtrs)
- ▶ **Auger:** Heavy Duty (AR400) Steel, Hard Faced, Symmetrical
- ▶ **Tires:** 9.5"x3.5" (Solid Rubber)
- ▶ **Max. Extrusion Cross Section:** 14"H x 16"W, (35.6 cm x 40.6 cm)
- ▶ **Speed:** 22 FT. / Min, (6.7 Meters / Min.)

OPTIONS:

- ▶ Electric Start (Kohler Only)
- ▶ Custom & Extra Wide Molds Available
- ▶ 4 Inch Auger Housing Assembly
- ▶ Under-Guardrail Kits, 4", 5" & 6" Dia. Augers
- ▶ 5" Auger and Compactor Tube Setup, for 6" (Std) Auger Hsg
- ▶ Cast Alloy Auger, (6" only)
- ▶ Left Hand Machine Set up, Field Reversible
- ▶ Hollow Auger Shaft
- ▶ Over-Rebar Molds
- ▶ Honda Engine (No Electric Start)
- ▶ Wheel Brake



www.curb-tec.com

The CT-900 Story

The CT-900 was introduced in 2001 to compete directly with the older style machines on the market.

The large hopper, ease of operation, and high production rates make the difference. Many of our new customers owned the old style machines.

As sales increased, and word got out, people started to ask for more. They wanted to curb over rebar, curb under guardrails, pour from the left, and extrude really small curb. SO, in 2006 the CT-900 was redesigned. The size, speed, power, and simplicity were kept but now it is much more versatile, even easier to use, maintain and repair.

Today's CT-900 will curb over an open trench, over rebar and under highway guardrail. It is now also available in left and right hand configurations that are field reversible. It is available with 4 inch, 5 inch, or the standard 6 inch diameter auger.

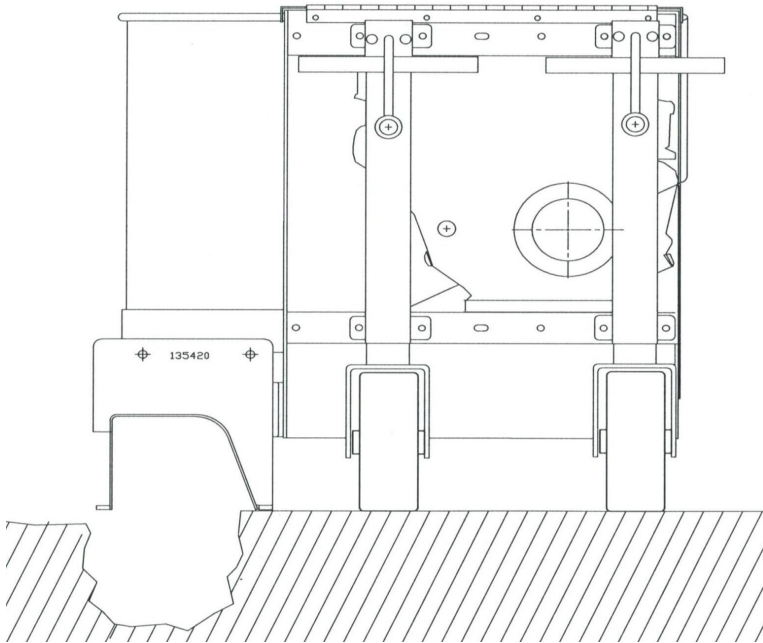
The CT-900's performance is only exceeded by the Curb-Tec CT-3000.

Curb-Tec, Inc. and Curb-Tec Europe have been working very hard to introduce extruded curb in many parts of the world. We are very pleased to report that we have been successful in many places. Extruded curb is not new. It has proven to be the most cost efficient way of installing curb regardless of local labor rates. This speaks volumes.

CURB-TEC, Inc. Tampa, Florida

Phone: (813) 949-9351

E-Mail: info@curb-tec.com



Fills Trench and Forms Curb in One Pass



Curb-Tec will make the mold shape you need



Huge Hopper

www.curb-tec.com